

DAILY TECHNICAL, 14 APRIL 2020

PT PROFINDO SEKURITAS INDONESIA

GD PERMATA KUNINGAN LT 19

JL KUNINGAN MULIA KAV 9C GUNTUR SETIABUDI JAKARTA SELATAN 12980

TELP +62 21 8378 0888

EMAIL : CUSTOMERSERVICE@PROFINDO.COM

WWW.PROFINDO.COM | PROCLICK.PROFINDO.COM

MARKET MOVERS



Bursa Amerika ditutup melemah dimana Investor masih menantikan rilis laporan keuangan Kuarttal 1 perusahaan. Selain itu investor mencermati perkembangan Corvid 19. Dow -1.39%, S&P 500 -1.1%, Nasdaq +0.48%

Bursa saham Eropa ditutup menguat setelah harga minyak kembali menguat. Selain itu investor mencermati stimulus terkait virus Corvid 19. Indeks FTSE +3.93%, DAX +2.24%, CAC +1.44%

Bursa Saham Asia dibuka variatif dimana investor masih menantikan data Unemployment US. Selain itu investor masih mengamati perkembangan virus Corvid 19. Indeks Hang Seng +1.39%, Shanghai 0%, Nikkei +1.02%, KOSPI +1.07, STI -0.16%

Harga minyak ditutup flat setelah OPEC dan Sekutunya akan memangkas produksi Oil sebesar 9,7 Juta Barel per Hari. Harga Emas ditutup menguat akibat melonjaknya permintaan Emas fisik oleh investor yang digunakan sebagai alat Lindung Nilai (Safe Heaven). Gold -0.79%, WTI +5.6%, Brent +2.58%

IHSG pada perdagangan hari ini diperkirakan akan melemah dengan Range pergerakan 4500-4650 dengan saham-saham yang dapat diperhatikan : **MDLN ADHI ANTM ICBP BRIS JSMR**

MARET DATA

AMERIKA

DOW 30	23,390.77	-328.60	-1.39%
S&P 500	2,761.63	-28.19	-1.01%
NASDAQ	8,192.43	+38.85	+0.48%

EUROPE

DAX	10,564.74	+231.85	+2.24%
FTSE 100	5,842.71	+220.68	+3.93%
CAC 40	4,506.85	+64.10	+1.44%

ASIA

SHANGHAI	2,783.04	-0.01	0.00%
HANGSENG	24,300.33	+329.96	+1.38%
SET	1,236.78	+8.75	+0.71%
KOSPI	1,842.75	+16.99	+0.93%
JCI	4,623.89	-25.18	-0.54%
NIKKEI	19,221.00	+177.60	+0.93%
STI	2,567.25	-4.07	-0.16%

COMMODITIES

GOLD	1,768.90	+7.50	+0.43%
WTI OIL	22.79	+0.38	+1.70%
BRENT OIL	32.16	+0.25	+0.78%
COAL	60	0	0%
PALM OIL	2246	-66	-2.85%
TINS	15,575.00	+647.50	+4.34%
NICKEL	11,822.50	+127.50	+1.09%

EVENT & ECONOMIC CALENDER

ECONOMIC CALENDER :

INDONESIA

14/04/20 IDR INTEREST RATE DECISION
15/04/20 IDR TRADE BALANCE

GLOBAL

14/04/20 US EXPORT PRICE INDEX (MoM) (MAR)
US IMPORT PRICE INDEX (MoM) (MAR)
US API WEEKLY CRUDE OIL STOCK
CHINA EXPORT (YoY) (MAR)
CHINA IMPORT (YoY) (MAR)
CHIAN TRADE BALANCE (MAR)
15/04/20 FRENCH XPI (MoM) (MAR)
US CORE RETAIL SALES (MoM) (MAR)
US CRUDE OIL INVENTORIES
16/04/20 GERMAN CPI (MoM) (MAR)
US INITIAL JOBSLESS CLAIMS
CHINA GDP (QoQ) (Q1)
CHINA GDP (YoY)
17/04/20 JPY INDUSTRIAL PRODUCTIONS (MoM) (FEB)

CORPORATE ACTION :

DEVIDEN

XISB RP 1.16 CUM 16/04, PAYMENT 27/04
SIDO RP 49 CUM 17/04, PAYMENT 5/05
MFMI RP 132 CUM 17/04, PAYMENT 13/05

RUPS

13/04/20 BULL PTRO
14/04/20 BNLI FAST BBYB ARTO
15/04/20 MERK DMAS BFIN
16/04/20 TCID BTPS BJBR
17/04/20 WSKT JAST

IPO

RIGTH ISSUE

WARRANT

JAKARTA COMPOSITE INDEX



PREVIOUS 13 APRIL 2020

CLOSING	4623.894	-0.54%
TRANSACTION	IDR 5.4 TRILLION	
FOREIGN NETT	IDR 322 BIO (BUY)	

PREDICTION 14 APRIL 2020

BEARISH
RANGE 4500-4650

THREE INSIDE DOWN
STOCHASTIC : DOWNTREND
MACD : HISTOGRAM POSITIF DAN UPTREND

TECHNICAL RECOMENDATION



MDLN – PT MODERNLAND REALTY TBK

CLOSING 13/4/2020 RP 95 (+20.3%)

**SELL ON STRENGTH
TKE PROFIT 110**

MORNING DOJI STAR
STOCHASTIC : UPTREND
MACD : HISTOGRAM POSITIF DAN UPTREND

TECHNICAL RECOMENDATION



ADHI – PT ADHI KARYA (PERSERO) TBK

CLOSING 13/4/2020 RP 635 (+7.63%)

BUY

TARGET PRICE 695

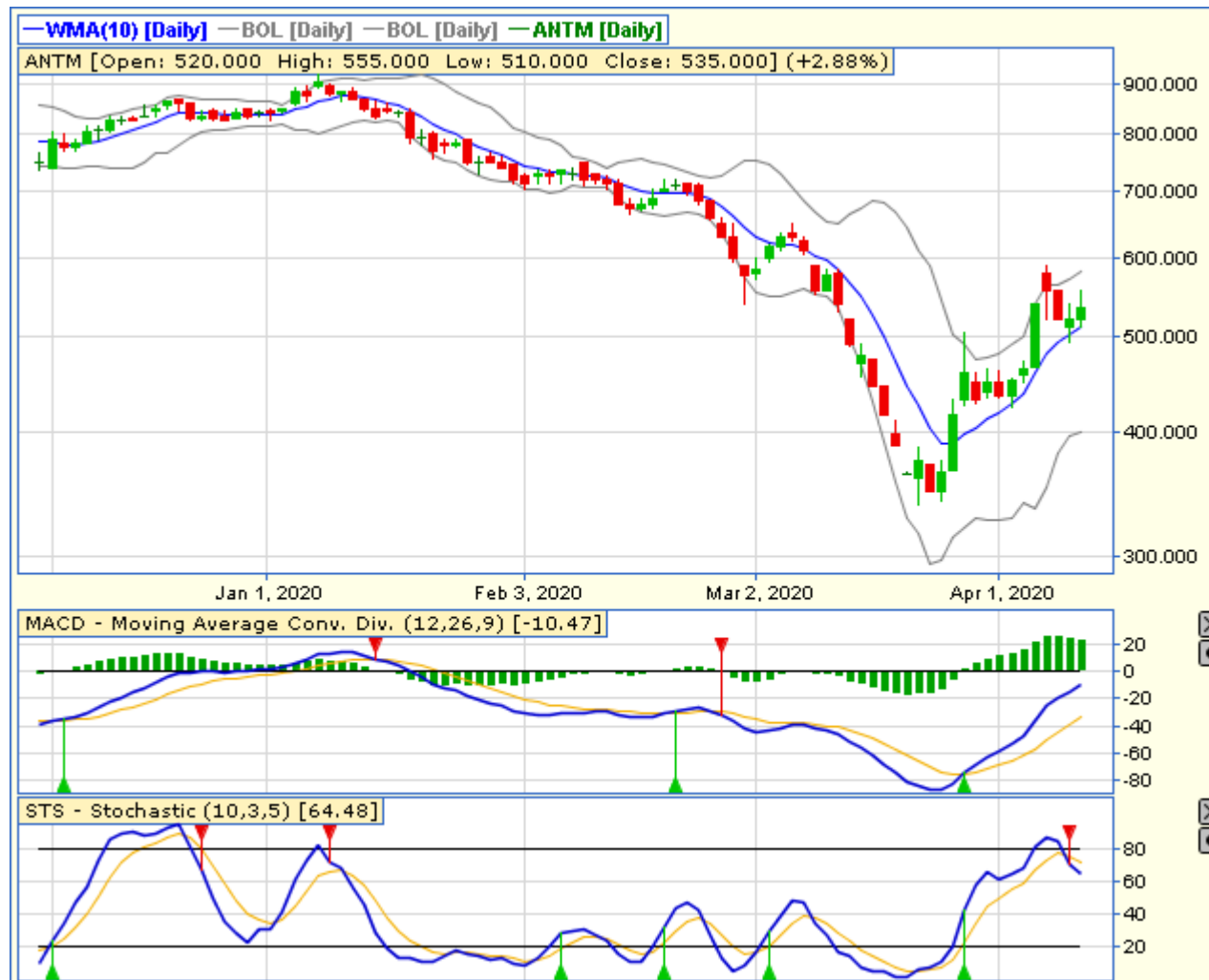
STOPLOSS < 620

MORNING DOJI STAR

STOCHASTIC : UPTREND

MACD : HISTOGRAM POSITIF DAN UPTREND

TECHNICAL RECOMENDATION



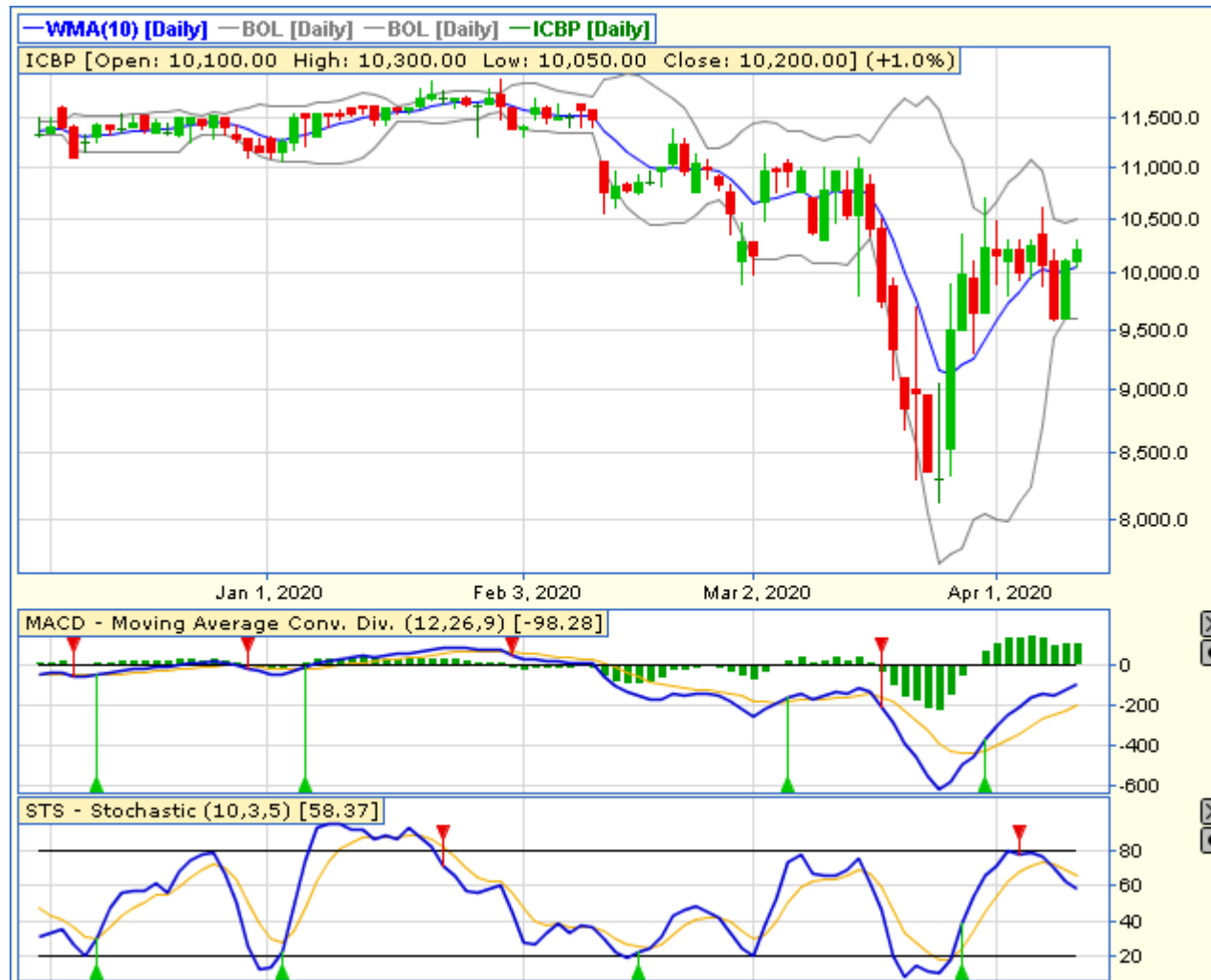
ANTM – PT ANEKA TAMBANG TBK

CLOSING 13/4/2020 RP 535 (+2.88%)

SELL ON STRENGTH
TAKE PROFIT 565

TWO WHITE SOLDIERS
STOCHASTIC : UPTREND
MACD : HISTOGRAM POSITIF DAN UPTREND

TECHNICAL RECOMENDATION



ICBP – PT INDOFOOD CBP SUKSES MAKMUR TBK

CLOSING 13/4/2020 Rp 10200 (+1%)

BUY

TARGET PRICE 10600

STOPLOSS < 10000

TWO WHITE SOLDIERS

STOCHASTIC : NETRAL DIAREA UPPER

MACD : HISTOGRAM POSITIF DAN UPTREND

TECHNICAL RECOMENDATION



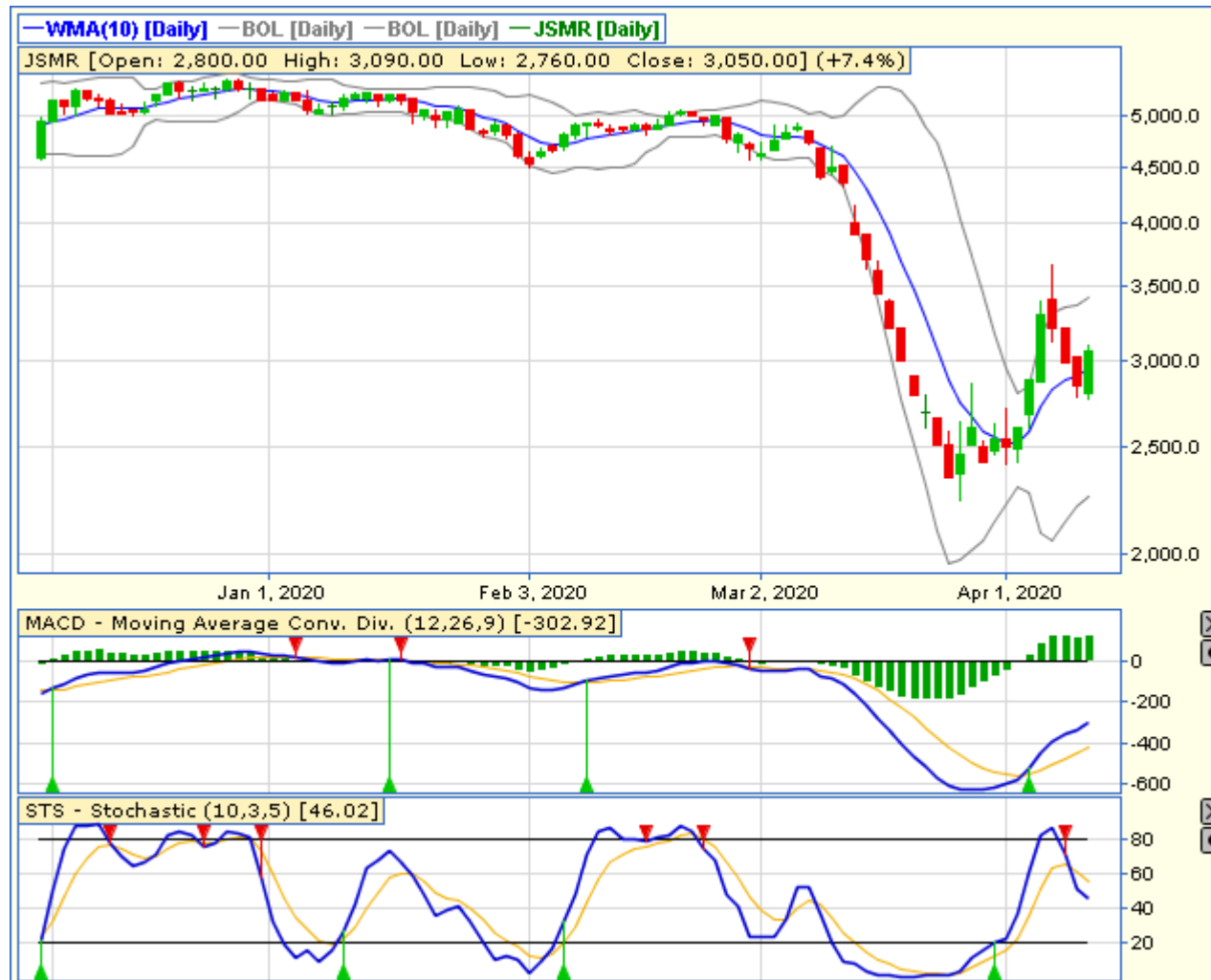
BRIS – PT BANK BRI SYARIAHTBK

CLOSING 13/4/2020 RP 200 (+3.6%)

**SELL ON STRENGTH
TAKE PROFIT 222**

THREE INSIDE UP
STOCHASTIC : NETRAL DIAREA MIDLE
MACD : HISTOGRAM POSITIF DAN UPTREND

TECHNICAL RECOMENDATION



JSMR – PT JASA MARGA (PERSERO) TBK

CLOSING 13/4/2020 RP 3050 (+7.4%)

BUY

TARGET PRICE 3660

STOPLOSS < 3000

BULLISH ENGULFING

STOCHASTIC : NETRAL DIAREA MIDLE

MACD : HISTOGRAM POSITIF DAN UPTREND

RESEARCH TEAM



YULIANA

**RESEARCH ANALYST &
CORPORATE FINANCE**



DIMAS WP PRATAMA, CSA

TECHNICAL ANALYST

EQUITY CAPITAL MARKET TEAM



JESSIE JAMES

HEAD OF EQUITY SALES



PRASETYO NUGROHO

HEAD OF DEALING ROOM



GABRIELLA PRATIWY

HEAD OF ONLINE TRADING